

# MONTHLY MEMBERSHIP PROGRESS REPORT

District 320 B

Results as of: 7/31/2024

GMT:

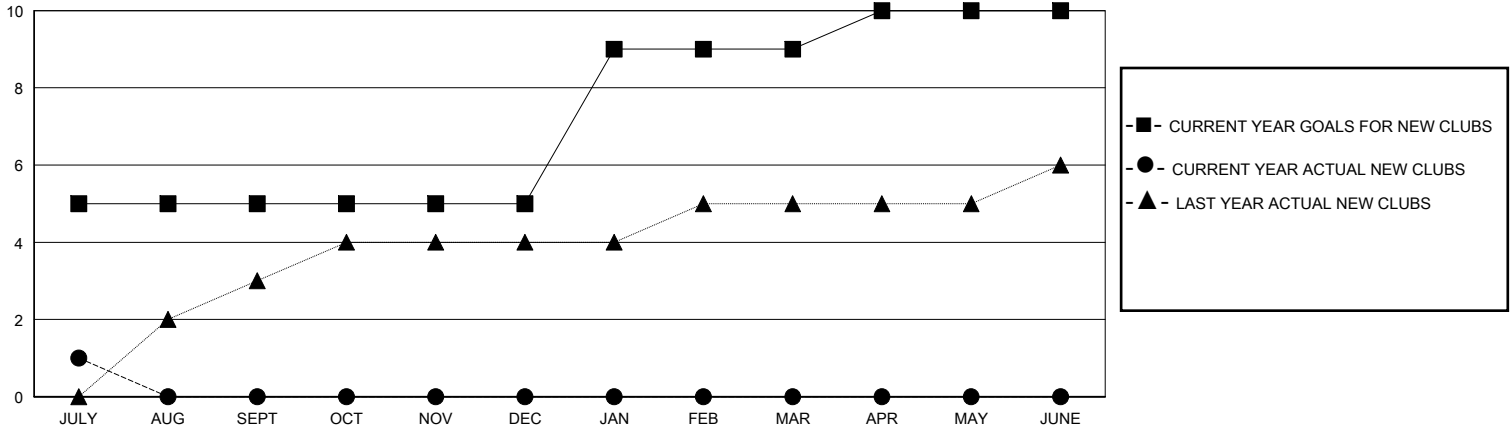
LOCATION INDIA

GMT CA

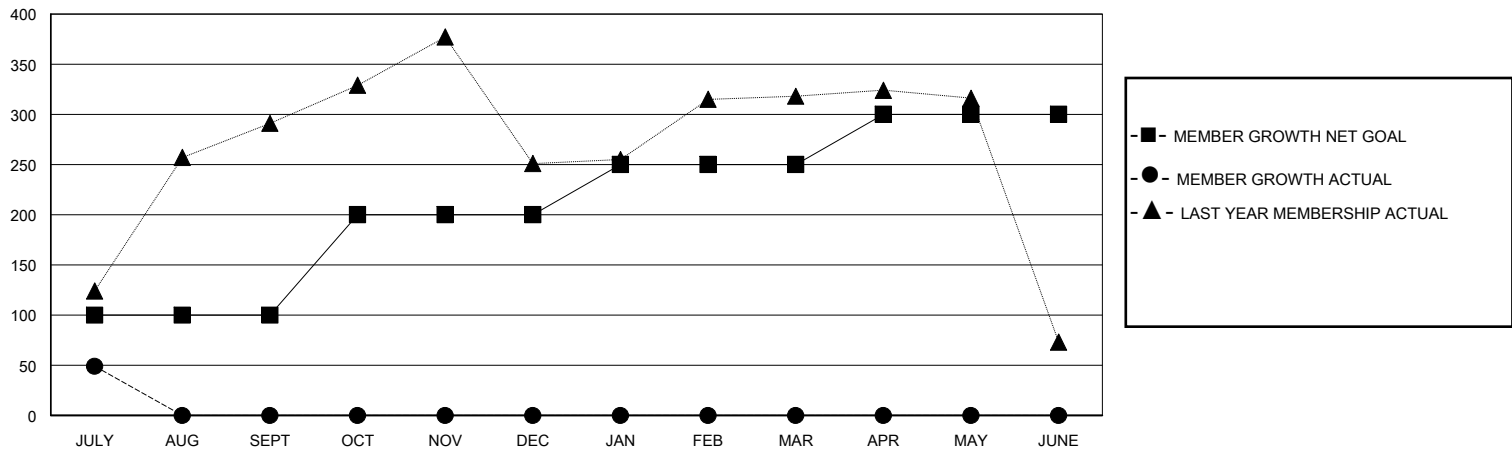
Clubs			
RESULTS FOR 2024-2025			
QUARTER	NEW CLUB GOAL	NEW CLUBS	DROPPED CLUBS
JULY/AUG/SEPT	5	1	0
OCT/NOV/DEC	0	0	0
JAN/FEB/MAR	4	0	0
APR/MAY/JUNE	1	0	0

Members			
RESULTS FOR 2024-2025			
QUARTER	MEMBER GROWTH NET GOAL	MEMBER GROWTH ACTUAL	DROPPED MEMBERS ACTUAL (including transfers)
JULY/AUG/SEPT	100	71	19
OCT/NOV/DEC	100	0	0
JAN/FEB/MAR	50	0	0
APR/MAY/JUNE	50	0	0

GOALS AND ACTUAL NEW CLUBS CUMULATIVE



GOALS AND ACTUAL MEMBERS CUMULATIVE



DROPPED CLUBS: 0	13 CLUBS OF 61 ADDED 1 OR MORE NEW MEMBERS	<b>GENDER DISTRIBUTION</b> MALE 1,381 (65.33%) FEMALE 733 (34.67%)
<b>DROPPED MEMBERS</b> DECEASED 1 CLUB CANCELLED 0 OTHER 17 TOTAL 18	<a href="#">CLICK HERE FOR CUMULATIVE MEMBERSHIP DATA</a>	TOTAL FAMILY UNIT MEMBERS 746 FAMILY MEMBERS PAYING HALF DUES 427